

Canon

CR-2 PLUS

Digital Retinal Camera

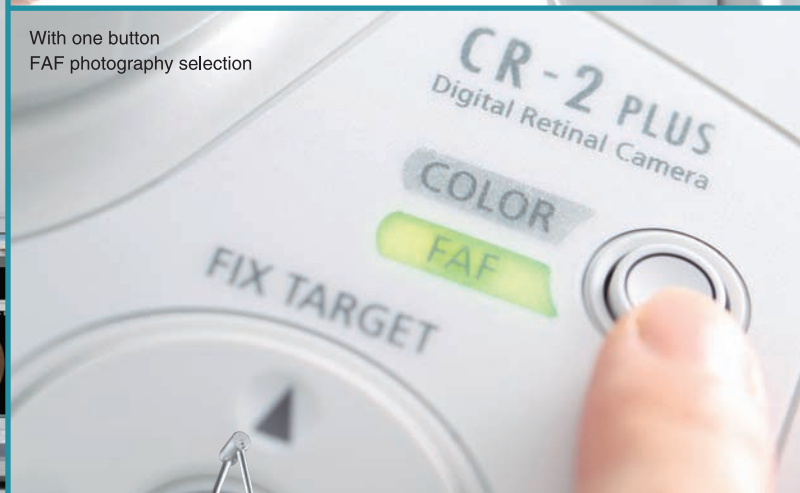
# Non-myd digital retinal camera

Loaded with new features including FAF photography



Vari-angle LCD monitor

With one button  
FAF photography selection



CR-2 Plus has sought to achieve the best photography possible to meet the high standards of eye care professionals with FAF capabilities and various ISO settings to service all sorts of retinal imaging needs.

Fundus autofluorescence (FAF) photography as a standard feature

Dedicated EOS digital camera (18.0 megapixels) for high-resolution imaging

High quality, low noise & efficient throughput from a wide range of settings

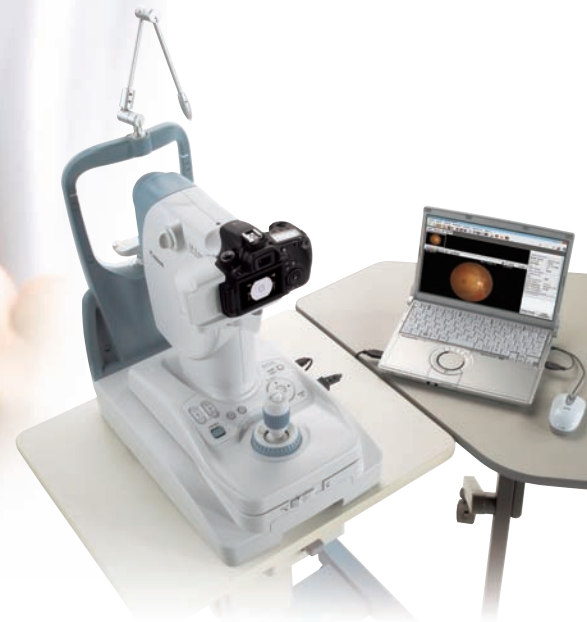
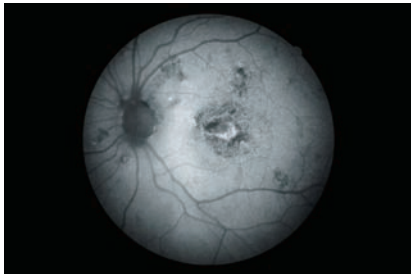
Digital red-free and digital cobalt image reproduction



# FAF equipped standard and supporting high-quality, wide range of ISO settings in a non-myd digital retinal camera.

## FAF-capable photography

FAF photography, useful for the early detection and progressive observation of AMD, is incorporated with the CR-2 Plus as a standard feature, selectable with the press of a button, optimizing image processing and testing time.



## High-resolution 18.0 megapixel image quality

The on-board 18.0 megapixel EOS digital camera effectively provides high-quality, high-resolution images. With the adopted vari-angle LCD monitor, freely change the angle of the screen for easy viewing. For example, the monitor can be angled upward when shooting while standing.



## High-quality, wide range of ISO settings

CR-2 Plus supports a wide range of ISO speeds. A shooting speed of ISO200 makes possible the output of images with high quality and low noise. Low flash intensity shooting at ISO6400 reduces the patient discomfort during successive photography.

## Digital Red Free/Cobalt

CR-2 Plus extracts each color element from the image digitally to display images similar to actual optical-filtered red-free and cobalt photographs. These generated images can be utilized for extensive analysis on different layers of the retina.

### Specs

<b>Type</b>	Digital retinal camera (non-mydriatic)	<b>Light source</b>	IRET for observation, xenon tube for photography
<b>Types of photography</b>	Color, Digital Red Free, Digital Cobalt, FAF	<b>Fixation target</b>	Internal fixation target: LED dot matrix External fixation target: White LED
<b>Angle of view</b>	45°	<b>Sensor resolution</b>	18.0 megapixels
<b>Magnification</b>	2X (Digital)	<b>Mounted digital camera</b>	Dedicated digital camera by Canon EOS technology
<b>Minimum pupil size</b>	φ 4.0 mm φ 3.3 mm when SP function is selected	<b>Mount movement amount</b>	Stage unit: 100 mm (side to side), 70 mm (front and back) Main unit: 30 mm (vertical)
<b>Working distance</b>	35 mm from the front of objective lens	<b>Operating environment</b>	Temperature: 10°C to 35°C Humidity: 30% RH to 90% RH
<b>Working distance adjustment</b>	Anterior observation: split lines adjustment Fundus observation: working distance dots	<b>Dimensions (W x D x H)</b>	305 mm x 500 mm 513 mm (12.0 in. x 19.7 in. x 20.2 in.)
<b>Patient's diopter compensation range</b>	Without compensation lens: -10D to +15D With "-" compensation lens: -31D to -7D With "+" compensation lens: -11D to +33D	<b>Weight</b>	Approx. 19.9 kg (43.8 lbs.)

Specifications are subject to change without notice.

# Canon

### CANON INC. MEDICAL EQUIPMENT GROUP

30-2, Shimomaruko 3-chome, Ohta-ku, Tokyo 146-8501, Japan  
Telephone: +81-3-3757-8497 Fax: +81-3-5482-3960

### CANON SINGAPORE PTE. LTD. Medical Equipment Dept.

1 HarbourFront Avenue, #04-01 Keppel Bay Tower, Singapore 098632  
Telephone: +65-6796-3549 Fax: +65-6271-4226  
<http://www.canon-asia.com>

### CANON AUSTRALIA PTY. LTD. Optical Division

1 Thomas Holt Drive, North Ryde, Sydney, NSW 2113, Australia  
Telephone: +61-2-9805-2000 Fax: +61-2-9805-2444  
<http://www.canon.com.au/default.aspx>